

2024-25 Euroleague Basketball

RULE CHANGES



Euroleague
Basketball

IRS CHANGES

SEASON 2024-25

IRS RULE CHANGE/ SEASON 24-25

- ☞ New reviewable matter: Backcourt violation
 - ☞ Only in the last 2 minutes of Q4 or overtime for referees
 - ☞ Available throughout the game for the coaches
 - ☞ Reviewable only if a call has been made

REFEREE REVIEWABLE MATTERS WITH CHANGES

ANY TIME (Art. 4)

GAME CLOCK	BASKET 24s	BASKET VALUE	BASKET DF	PHYSICAL ALTERCATION	FREE-THROW SHOOTER
SHOT CLOCK	FOUL 24s	# OF FREE THROWS	BASKET OF	ACT OF VIOLENCE	

LAST 2 MINUTES 4th QUARTER or OVERTIME (Art. 3)

OUT OF BOUNDS	GOALTEND /INTERFERENCE	DEFENSIVE SEMI-CIRCLE	BACKCOURT VIOLATION
FOUL REVIEW	AOS FOUL	SHOT CLOCK RESET	

END OF QUARTER or OVERTIME (Art. 2)

BASKET EOQ	FOUL EOQ
------------	----------

EB RULE CHANGES

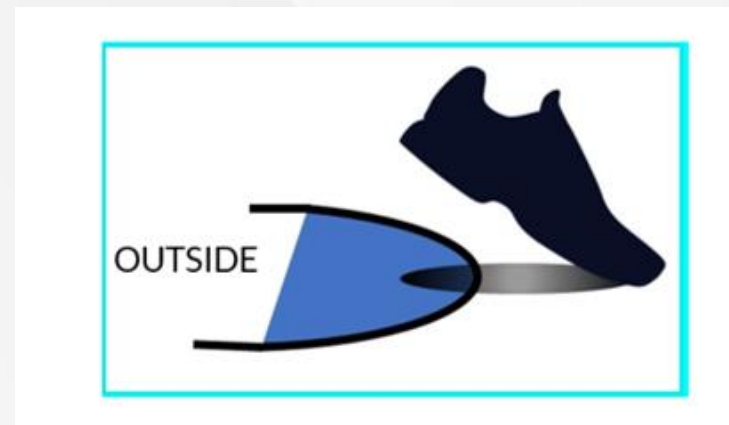
SEASON 2024-25

EUROLEAGUE RULE CHANGES /

SEASON 24-25

☞ Align with FIBA with regards to the following:

- ☞ A violation that occurs during the initial jump ball will no longer result in a throw-in by a player straddling the centre line and the team having 24 seconds on the shot clock. According to FIBA, if the violation occurred on the frontcourt of the opposite team, then the ball will be inbounded on the frontcourt with 14 seconds on the shot clock.
- ☞ A defensive player is considered to be OUTSIDE the defensive semi-circle if his foot is elevated above the DSC line like so:



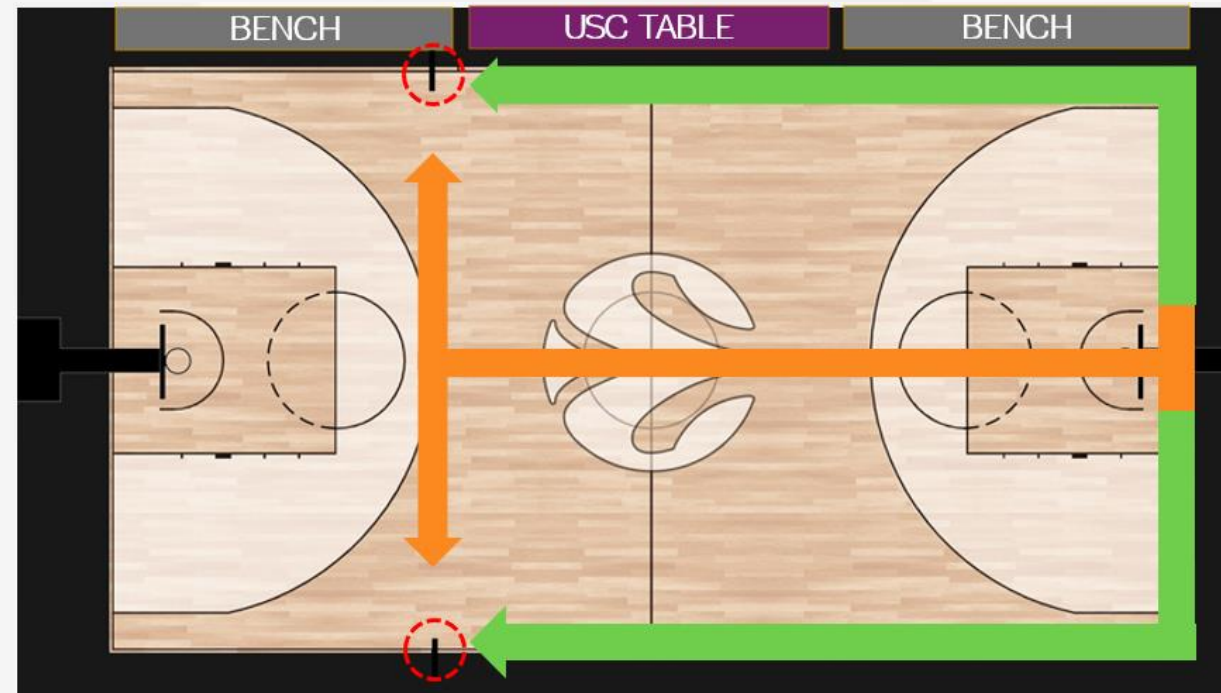
EUROLEAGUE RULE CHANGES /

SEASON 24-25

☞ Align with FIBA on Article 17 – Throw-in:

When a head coach decides for a frontcourt throw-in after a timeout in the last 2 minutes of the game:

- ☞ The throw-in shall take place at the frontcourt throw-in line on the same side of the court as the place/side of the backcourt throw-in.
- ☞ If the backcourt throw-in was to be on the endline, **after a successful goal or successful last free throw**, the head coach has the right to decide which frontcourt throw-in line the throw-in shall be from.



FIBA RULE CHANGES

SEASON 2024-25

FIBA RULE CHANGES / SEASON 24-25

🌀 Article 31 - Goaltending and Interference

Art. 31 Goaltending and Interference

31.2.3 The goaltending restrictions apply until **the ball**:

- **No** longer has the possibility to enter the basket.
- **Has** touched the ring.

31.2.4 Interference occurs when:

...

- A player causes the basket to vibrate or grasps the basket **(ring and/or net)** in such a way **that causes the ball to take an unnatural bounce or to change direction, thus** the ball **is** prevented from entering the basket or **is** caused to enter the basket.

FIBA RULE CHANGES / SEASON 24-25

☞ Article 40 – Foul limits by a player and game disqualifications

- ☞ New GD marker.



- ☞ Any game disqualified person must leave the game immediately **taking no more than 30 seconds** and shall go to and remain in the dressing room for the duration of the game or shall leave the building. Failure to comply with the 30-second period will be reported on the scoresheet.

FIBA RULE CHANGES / SEASON 24-25

🌀 Article 44 – Correctable Errors Category 1

44.2 Correctable errors category 1 – Definition

The below category 1 errors may be corrected by the referees if a rule is incorrectly applied.

- Awarding an unmerited free throw(s).
- Failing to award a merited free throw(s).
- Permitting the wrong player to attempt a free throw(s).
- Directing the wrong player to attempt a free throw(s).
- Erroneously awarding or cancelling of a point(s).
- Reporting a foul against the wrong player, head coach or team.
- Scorekeeping errors, including:
 - failing to record or erroneously recording points.
 - failing to record or recording a foul against the wrong player, head coach or team.
 - failing to record or recording a time-out against the wrong team.
- Game clock errors, including malfunctions, in starting or stopping the game clock correctly or in setting the correct time on the game clock.

FIBA RULE CHANGES / SEASON 24-25

🌀 Article 44 – Correctable Errors Category 1

44.3 Correctable errors category 1 – General procedures

44.3.1 To be correctable, the errors must be identified by the referees, commissioner, if present or table officials as follows:

- If the error occurs before the game clock shows 2:00 minutes or less in the fourth quarter, the error must be corrected before 2:00 minutes or less are remaining on the game clock.
- If the error occurs before the game clock shows 2:00 minutes or less in the fourth quarter, but the referees stop the game for the first time with less than 2:00 minutes remaining on the game clock, the error must be corrected before the ball becomes live again.
- If the error occurs after the game clock shows less than 2:00 minutes in the fourth quarter or in an overtime, the error must be corrected before the ball becomes live after the first time the referees have stopped the game for any reason following the error.

44.3.2 These errors are no longer correctable after the ball becomes dead when the game clock sounds for the end of the game unless the error occurs after the last time the referees have stopped the game for any reason before the game clock signal sounds for the end of the game. In such a case, the error must be corrected immediately after the end of the game and the teams shall remain on the court or in their team bench areas.

FIBA RULE CHANGES / SEASON 24-25

🌀 Article 44 – Correctable Errors Category 1

44.3.3 Once an error that is still correctable has been **identified**, and:

- The **team member** involved in the correction of the error is on the team bench after being legally substituted, that **team member** must re-enter the court to participate in the correction of the error, at which point the given **team member** becomes a player.
- Upon completion of the correction, the player may remain in the game unless a legal substitution has been requested again, in which case the player may leave the court.
- **If the team member has been excluded, disqualified, unable to play due to injury or cannot be identified, the head coach shall designate the team member to participate in the correction of the error.**

FIBA RULE CHANGES / SEASON 24-25

☞ Article 44 – Correctable Errors Category 1 Special Procedures

44.4.6 Reporting a foul against the wrong player, head coach or team:

The scoresheet shall be corrected. Any erroneously excluded or disqualified player or head coach shall re-enter the game. Any player or head coach who should have been excluded or disqualified shall be excluded or disqualified.

44.4.7 Scorekeeping errors

- failing to record or erroneously recording points.
- failing to record or erroneously recording a foul against the wrong player, head coach or team.
- failing to record or erroneously recording a time-out against the wrong team:

The scoresheet shall be corrected and any resulting action such as a player exclusion or re-entering the game shall be applied.

The FIBA procedure for the above types of correctable errors **WILL NOT APPLY** the same way to our competitions. We will continue correcting such errors with the help provided by EB headquarters.

FIBA RULE CHANGES / SEASON 24-25

☞ Article 44 – Correctable Errors Category 2

44.5 Correctable error category 2 – Definition

The below category 2 error may be corrected by the referees if a rule is incorrectly applied:
Shot clock errors, including malfunctions, in starting or stopping the shot clock correctly or errors in setting the correct time on the shot clock.

FIBA RULE CHANGES / SEASON 24-25

🌀 Article 44 – Correctable Errors Category 2

44.6 Correctable errors category 2 – General procedures

44.6.1 To be correctable, the error must be identified by the referees, commissioner, if present or table officials

- when the ball is live immediately after the error and the referees stop the game to correct the error, or
- when the referees have stopped the game the first time for any reason, and the team in control or entitled to the possession of the ball at the time of the error shall keep control of the ball or stay entitled to the possession of the ball.

The shot clock shall be corrected to the correct time.

44.6.2 Shot clock errors are no longer correctable after:

- A change of possession of a live ball after the error.
- The team in control of the ball scores a valid goal,
- The ball becomes dead when the game clock sounds for the end of the game.

FIBA RULE CHANGES / SEASON 24-25

🏀 Article 1.2 - Participants' Responsibility

Art. 1.2 Participants' responsibility

All participants in the game, table officials, the technical delegates/commissioners, if present, all team members entitled to play, the head coaches and other accompanying delegation members should play a positive role in the smooth running of the game and are expected to always demonstrate ethical behaviour. Should they become aware of an inaccuracy (correctable error) in scorekeeping involving the score, fouls, time-outs as well as the timekeeping and shot clock operations, they are expected to notify the referees immediately to ensure and facilitate the error to be corrected in accordance with these rules.

FIBA RULE CHANGES / SEASON 24-25

☞ C – Protest Procedure

C – Protest Procedure

C.1 A team may file a protest if its interests have been adversely affected by:

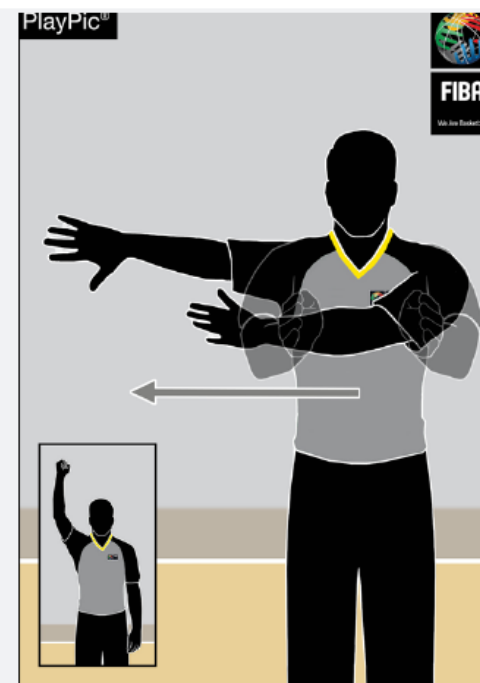
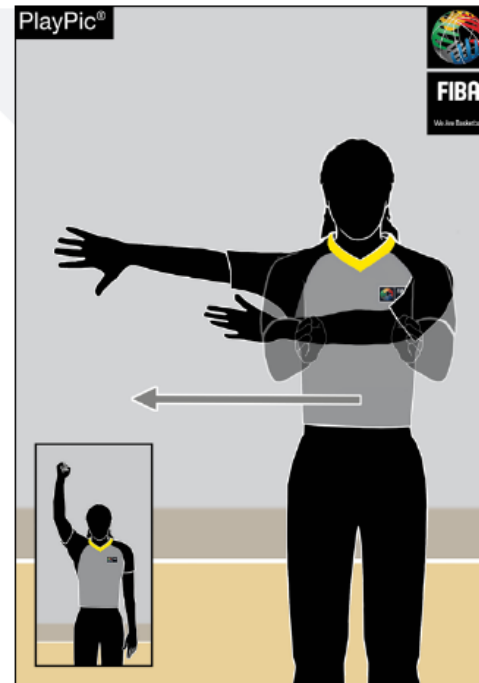
- a. An error in scorekeeping, timekeeping or shot clock operations, which the referees were authorised to correct as provided in these rules and had access to verifiable evidence available at the time of the decision to correct the error under Article 44 (Correctable errors) but failed to do so.
- b. A decision to forfeit, cancel, postpone, not resume or not play the game.
- c. A violation of the applicable eligibility rules.

FIBA RULE CHANGES / SEASON 24-25

Appendix A – Referee Signals

When a player is fouled in the act of shooting, but then decides to pass the ball, this is considered as a "not act of shooting foul" and therefore a "pass-off" signal is used to clarify the situation immediately (clarity).

NEW SIGNAL



FIBA RULE CHANGES / SEASON 24-25

☞ F.4.2. – Head Coach Challenge

To provide coaches with the same flexibility as with substitutions/time-outs, allowing them to withdraw their requests.

The request for Head Coach's Challenge can be cancelled until the referee grants the request with the Head Coach's Challenge signal.

FIBA RULE CHANGES / SEASON 24-25

🌀 OBRI Art 36 - Technical Foul / Faking to be fouled

These FIBA changes **WILL NOT APPLY** to our competitions.

We will evaluate them during next season, and we will decide if they will be applied or not for the 2025-26 season.

2024-25 Euroleague Basketball

THANK YOU!



Euroleague
Basketball